

Jersey Methodist Circuit

January 2024



Superintendent/Chair of CI District

The Revd Dawn Saunders
Tel: 722093
revdawnsaunders@gmail.com

www.jerseymethodist.org.uk
Facebook 'Jersey Methodist Circuit'

Administrator

Audrey Tupper
Tel: 07797 847604
circuit.office.jsy@gmail.com

Our Mission

To build confident faith in God, to encourage Christian growth and to strengthen community life in Jersey

Bethesda, Bethlehem, Ebenezer, Georgetown, St Aubin, St Helier Methodist Centre, St Martin, St Ouen

Dear Friends

I would like to share some joyful news! Audrey is retiring! (31st January). This is indeed joyful for Audrey!

Although we will be sad to see her finish in her role, I know that we all want nothing but the very best for her. Audrey feels that this is the right time to enter her retirement and there are plenty of activities that she would like to engage with and we hope and pray that she has the time to explore these. I, along with you all, will miss her input to the smooth running of the District and Circuit. Her pastoral support as well as her unrivalled administrative and organisational skills will be missed.

I want to take this opportunity to thank Audrey on behalf of you all for an amazing job, well done, with integrity and humility and a wonderful sense of humour.

With every blessing

Dawn

Prayer for the Week: January (Helen Higginson)

Week of 7 January

Dear God, resolutions may come in one year and go out the other, but we thank you that You are with us, that You are in us all year every year. Thank you for your faithfulness. Open our ears this year, so that we can hear You and open our eyes that we may see you in those who need help. Amen.

Week of 21 January

Eternal God, You gave us the greatest gift, the gift of life. In this coming year help us to use it wisely. May we grow in generosity, kindness, and forgiveness, hope faith and love. Amen

Week of 14 January

Dear God,
Give me the courage to begin again -to overlook the difficulties, to overcome the obstacles and to stay open to your calling. Help me to be patient enough to know it takes time to start over, and wise enough to ask for help from family and friends when I need it. May we look O God to You for guidance each day. Amen

Week of 28 January

O God of steadfast love, trusting in you, we devote our hearts to learning and our lives to walking. Teach us the truth, that we may walk with courage. Teach us forgiveness that we may walk with compassion. Teach us grace that we may walk with strength. Teach us wonder; that we may walk with praise. Teach us goodness that we may walk with those in need. Amen

The Gate of the Year

And I said to the man who stood at the gate of the year:
"Give me a light that I may tread safely into the unknown."

And he replied:
"Go out into the darkness and
put your hand into the Hand of God.
That shall be to you better than light
and safer than a known way."

So I went forth, and finding the Hand of God, trod gladly into the night.
And He led me towards the hills and the breaking of day in the lone East.

Minnie Louise Haskins



Christmas around the Circuit

Georgetown



During the final community coffee morning before Christmas, Aaron Le Maistre tinkled carols and Christmas music on the piano whilst children from Brighter Futures came in to receive gifts made up by the members of the Friendship group. The church's decorations were supplemented by a snowflake collage from 9th Greve d'Azette Brownies and Bert Vasse gave a heartfelt rendition of 'In the Bleak Midwinter' at the mid-week soup lunch and Christmas carol service.

St Helier Methodist Centre



The decorations this year were inspired by Rev Tony's sabbatical theme of rivers. One side of the church's windows displayed texts from the Prophets, whilst the opposite windows bore words from the Gospels.

Elsewhere in the church foyer Sally and Ellen had produced a large eye-catching paper 'mosaic'.

Bethesda, Bethlehem, Ebenezer, Georgetown, St Aubin, St Helier Methodist Centre, St Martin, St Ouen

St Martin's Methodist Church - Christmas 2023 and New Year

Pre-Christmas, those of us who attended Rev Tony's Bible Studies at Ebenezer during Advent, found them extremely interesting, informative and challenging. A lot of erudition, lightly worn was shared with us. An extra bonus was our sharing with friends from Ebenezer and further afield.

Christmas Messy Church was its usual delight, with relatively quick-fire activities to allow for a special Christmas supper and then the obligatory visit from Father Christmas, who held the children enthralled with a description of his activities coupled with a very good message.

On the 17th December we shared with our fellow parishioners for a short open air Carol service on the Parish Green, with Rector Pete Stone, joined by his colleagues the Vicar of Gouray and our own Tony and Cathy accompanied by the occasional bark of a dog and whoops of delight and tubular bells from the new and very popular children's playground just behind us.

Our decorators yet again excelled themselves with inventive ideas to bring the Christmas message to us so that on Christmas Eve we held an LA Carols Songs of Praise at 10.30 with our more elderly members in mind who would perhaps not wish to travel after dark.



Then at 6.30 the atmosphere in church was transformed by candlelight for the ever-popular service of Nine Lessons and Carols, led by Rev Tony. It was good to see the congregation restored to almost pre-Covid levels, even on Christmas Eve. The

short service on Christmas morning led by Dr Martin Delap included a special surprise when Martin organised a mobile telephone link with our friends at St Helier Methodist Centre so that we could share Christmas Greetings!

New Year has continued the ecumenical theme when we attended the Parish 'Plough Sunday' Service, not only blessing the symbolic plough but honouring the faithful cooperation of our farming community with God's gracious gift of the natural world to begin the annual task which eventually leads to our Thanksgivings for the Harvest. So much to give us hope at this rather bleak time of year and the dysfunctional world we hear about daily in our news broadcasts. We are indeed blessed.

Bethesda, Bethlehem, Ebenezer, Georgetown, St Aubin, St Helier Methodist Centre, St Martin, St Ouen

St Aubin



The church's white gift tree is erected in November and members take labels that have a gift suggestion written on and the name of the charity making the request. They then bring wrapped and labelled gifts to put under the tree on the second Sunday of December. In December some 88 gifts were delivered to local charities, which was a super effort.

This year both La Moye and Mont Nicolle Primary Schools held their carol services at the church. St Aubin's could not invite their own congregation to attend as the church was full of children, parents and friends on each occasion but the members were delighted that they choose to go to St Aubin's at this special time of year.

Bethlehem

Their 'Giving Tree' was decorated with the angels that they made at their recent All Together Worship service. They were supposed to be 'simple', but they were more challenging than they thought, as you can see from the photos! Thankfully there were a few experts on hand to help. The tinned goods and foodstuffs were given to Grace Trust after Christmas.



Ebenezer



Rev Dawn led the popular 'Pantivity' with Sonny Le Maistre as narrator. Rev Peter's more reflective service on Christmas Eve was much appreciated, during which the children made a crib scene with paper towel and toilet rolls in under ¼ hour! The Circuit service on 31 December yielded £430 in the offertory, which will be split between Mind Jersey and the Bible Society, Ebenezer's chosen charities to support this financial year. Many thanks to all those who donated.

Bethesda, Bethlehem, Ebenezer, Georgetown, St Aubin, St Helier Methodist Centre, St Martin, St Ouen

Ideas for Christmas 2024!

Giving stars for Christmas

1,400 stars were crafted and given out to people on the new housing estate Cwrt St Ioan on Plasdwr by members of Radyr Methodist Church near Cardiff in the Wales Synod. There was as much enthusiasm by those making the stars as there was from those who received them.

The weather was dry and suitably cold when a team from Radyr Methodist Church walked through the roads and closes to leave bags with a star and Christmas cards to those families living on the estate, and also the house sales staff, the builders who were working on the new houses and even local shops.



Almost all the church members have been handmaking the stars since last September. Using paper, cardboard, wool, tissue, glitter and paint, each star is unique and thoughtfully made. The idea occurred to the Revd Judith Holliman, Radyr Minister, when she was prayer walking in Cwrt St Ioan on Plasdwr. With her congregation she has been pioneering in the new estate for the past four years, always with great success and warm responses from the inhabitants who enjoy the commitment and caring presence of the congregation. "As I prayed I just felt strongly that we should give a star to every house on the estate this Christmas.



"I shared the idea with the evangelism group that grew out of the 'Everyone an Evangelist' pilot project in Radyr. They started talking about it in church and the stars started coming in," remembers Judith.

200, 400, 600, the stars were from individuals, from groups such as the Art Community that meets on Wednesday afternoons and others. The Brownies made stars, the friendship group, the Guides and the Bible Study groups, everyone wanted to participate.

Radyr's congregation bring welcome boxes to the new homeowners and offer weekly prayer walks to those who want to join. "We also collect regularly across the estate for the food bank, the response has been incredible. They are looking forward to our next outreach and so are we," concludes Judith.

The Big Card

The members of Bethlehem kept a 'big card' at the back of the church which everyone signed and sent their best wishes to each other. Donations were in aid of their favoured charity, the Shelter Trust.

Bethesda, Bethlehem, Ebenezer, Georgetown, St Aubin, St Helier Methodist Centre, St Martin, St Ouen

Life at Queen's (so far!)

In September 2023, I began my Formation training at Queen's Foundation in Edgbaston, Birmingham. This will be a 3-year course on a part time basis, which means Zoom sessions each Tuesday evening, with my tutor and cohort. To prepare for each session, there is a workbook including reading and podcasts. In addition, for each academic year, we attend 6 residential weekends and Holy Week at Queen's.



The cohort in our year is small in number. There are only 12 – 6 of whom are self-funded and only 5 are Methodists, who are training to become Ministers – either Presbyters or Deacons. Already, we have formed very strong and open relationships, supporting and encouraging each other. The photograph is taken outside the beautiful chapel at Queen's and includes all students, as well as an interloper, studying full time at the college. The 12 students are split into 2 cell groups. In our cell groups, we work collaboratively in practical exercises. In February, we are to present on a subject of – Caring for the elderly – who should pay? As you will no doubt appreciate, this is a very broad topic which we prepared for prior to Queen's and discussed at our January weekend through an exercise in theological reflection.

The 2 cell groups are responsible for leading worship at Queen's. For our January weekend, our cell group was responsible for leading 4 services, although we will get a break in February! It has been interesting to see the different styles of worship and to see some students, who have never stood at the front of a church before, building confidence to read aloud and begin to write prayers. Only half of the students have more than a few year's experience in preaching or leading worship and "experienced preachers" have a choice of learning Preaching Skills with those less experienced or work together on exciting topics such as building narrative around a Good Pharisee!

Our tutors are fantastic – knowledgeable, caring and they challenge us. In the first term, we began an introduction to the Hebrew Bible and are now studying the New Testament. At weekends, we are studying Theological Reflection and Preaching, as well as the practical application of leading worship. As there is a lot to fit in, the weekends at Queen's are very busy, but with many opportunities for growing relationships.

I am learning so much from the tutors and other students in a multi-cultural environment. When saying the Lord's Prayer in chapel, we are encouraged to pray in the language most familiar to us and this can be quite disconcerting at times but so wonderful to know that all on the course have been called to study Theology and Mission, with a view to becoming ordained.



All Methodists are called to serve God and others. How is God calling you?

Lorraine Wheeler, Student Presbyter

Bethesda, Bethlehem, Ebenezer, Georgetown, St Aubin, St Helier Methodist Centre, St Martin, St Ouen

Being Circuit: Neil Fauvel



After being Christened at St Mark's Church, raised and later helping with Junior Church at St Brelade for a number of years, Neil gave his life to Christ at the MAYC at the Albert Hall in 1998. He had enjoyed his time at St Brelade's Church, involved in healing ministry and as a sidesman, but the preaching of presbyters like Derek Poole at Sunday evening services at Bethesda prompted a move in 1998. Neil is currently property steward at Bethesda, where issues at both the chapel and hall keep him busy. He serves as one of the four church stewards too.

His parents' first house with a sand dune for a garden in Petite Route des Mielles might have proved an uninspiring start for the budding horticulturist but the young Neil helped his Dad deliver many van loads of top soil and things literally grew from there. He was cultivating his first cacti on the window sill (occasionally dunked in the kitchen sink!) from the age of 10, and selling them in local bazzars and his Dad's investment in a greenhouse for Neil in his early teens led to him discovering the joys of growing bedding plants.

It was a natural move to study for his City & Guilds in Horticulture under Dennis Shaw, which led to a career as a landscape contractor and then work with St Helier's Parks and Gardens in greenhouses, mowing and machine maintenance. He was part of the talented team invited to make the flower display at the entrance to the Chelsea Flower Show for the Queen's Diamond Jubilee. Normally given 2 years to design and put together such a display, the Jersey team had only 16 weeks so it was all hands to the pump. The same St Helier team also scooped Gold at the 2014 RHS Show at Tatton. After doing the popular gladioli floral displays at St Helier's town hall during Battle of Flowers week, Neil continues his flower arranging on the Bethesda flower rota.



Now in retirement on the north coast, growing, displaying and competing is still one of his passions. Having joined the RJA&HS in 1975, Neil first started showing his vegetables at the age of 16. He is on the Spring Show committee and has been directing steward for the show for a few years. With his 'tricks of the trade' he has won numerous certificates for his Jersey lilies, cape primroses, sweet peas, stromanthias and floribunda and most fragrant rose (as well as the Jersey Rosarian Rose Bowl - *below*) and prizes for his Jersey Royals, onions, beetroot, parsley, tomatoes, Bramley apples – just to name a few. Lucky passers-by can buy them off his garden wall. He is passing on his love of growing to the children at Bethesda Junior Church who have won their own 'set bulbs' class at the RJA&HS.



Bethesda, Bethlehem, Ebenezer, Georgetown, St Aubin, St Helier Methodist Centre, St Martin, St Ouen

Neil enjoys baking cakes which he displays at the RJA&HS shows: rock cakes, fruit cake and apple pies etc. At the Spring Show last year his winning Victoria sandwich was auctioned off for charity and ended up in Government House (by Royal Appointment his friends joked!). Those attending Bethesda faith lunches also enjoy the fruits of his oven.



After his Grandad gifted him an instamatic camera at the age of 8, Neil was further inspired by art teacher Leo Harris at Les Quennevais. He then honed his skills at evening classes and in time joined the Jersey Camera Club, with exhibition prints accepted for the Jersey and Guernsey Eisteddfods, some of which he won. He particularly enjoys photographing racing cars at events like Le Mans and he has inspired his younger friends, who have gone on to win at Eisteddfod level too. He mounts the photos himself and his latest camera, a Lumix G9, is his pride and joy.



Until he finds another completely new hobby to excel at, Neil's attention will unfortunately be focussed on securing final Planning approval for putting dormer windows in the roof of his cottage, originally built in 1700. We doubt he will be completely redundant - watch this space!



Methodist Way of Life

Wednesday 14 Feb	11.00am	Ash Wednesday Communion	Georgetown
Tuesday 20 Feb	2.30pm	What is a Methodist Way of Life?	Ebenezer
Tuesday 27 Feb	2.30pm	Christian Practices	Ebenezer
Tuesday 5 Mar	2.30pm	Worship	Ebenezer
Tuesday 12 Mar	2.30pm	Learning & Caring	Ebenezer
Tuesday 19 Mar	2.30pm	Service	Ebenezer
Tuesday 26 Mar	2.30pm	Evangelism	Ebenezer
Wednesday 27 Mar	12.00pm	Lent lunch before a short service	Georgetown
Thursday 28 Mar	7.30pm	Maundy Thursday Communion	St Aubin
Friday 29 Mar	10.30am	Good Friday Services	St Helier

[A Methodist Way of Life](#) offers a way for us to express our discipleship and spirituality by commitment to a set of practices. It puts into words how we can live our lives in response to God's love made known to us in Jesus.

Like the early Christians (Acts 2:42-47), we seek to express what it means to follow Jesus in the regular, practical actions of worship, learning and caring, service and evangelism.

Since the days of John Wesley, Methodists have sought to follow Jesus in their own age. You're invited to share in this Jersey Methodist Circuit lent course for 2024, and together share what that means for us today.

To know more speak to Tony tony@methodistcentre.je Peter methodistpeter@gmail.com or Helen higginsonhe@outlook.com Each session will last one hour.

Bethesda, Bethlehem, Ebenezer, Georgetown, St Aubin, St Helier Methodist Centre, St Martin, St Ouen

The John Wesley Conversion Place Memorial – the 'Aldersgate Flame'



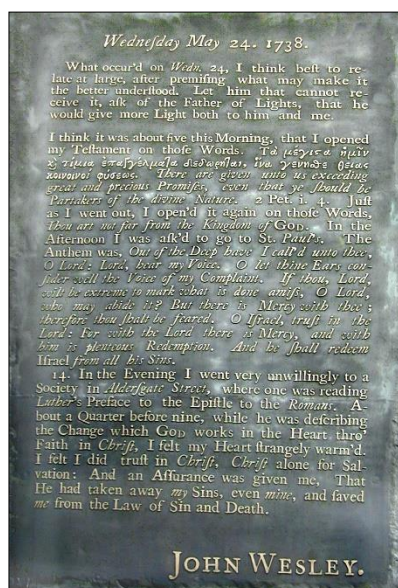
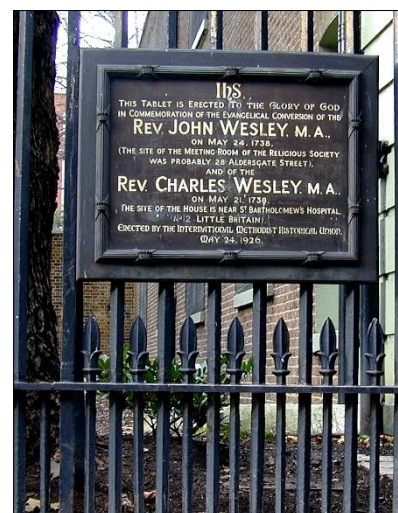
At Christmas in 1737, John Wesley had returned, disillusioned and depressed, from a disastrous two years in America. On the stormy Atlantic crossing, he had found himself terrified of dying and had been deeply impressed by the Moravian missionaries and their families who, during the height of the storm, had shown no fear. Wesley saw that these people had a deep personal religious experience that was alien to his severe and conventional Christianity.

During the following months, Wesley sought out the Moravian group who gathered in the City of London, and at a meeting at the home of bookseller, John Hutton, near Aldersgate Street, Wesley had the famous religious experience that changed the direction of his life.

Since that time, and particularly throughout the 20th century, people from all over the world have been drawn to visit the place where that event took place, and prior to 1981 they may have been considerably underwhelmed when all they found was a small plaque on the fence of nearby Postman's Park.

The exact location of Hutton's house isn't known, because all the buildings in that area were replaced in the 19th century. Modern research has concluded that it was in a turning called Nettleton Court, at the southern end of Aldersgate Street.

Following massive destruction suffered in the second world war, the area bordered by Aldersgate Street and London Wall, was extensively redeveloped between 1965 and 1976 and named the Barbican Estate.



The Methodist Church realised that, at last, here was an opportunity to create an eye-catching memorial close to the presumed site of John Wesley's conversion experience.

A subcommittee of the Home Missions department was formed, and was chaired by the remarkable Martin Ludlow, a Methodist local preacher and prominent London businessman. They commissioned a design for a bronze sculpture that would stand 4.9 metres high and would be located beside the newly built Museum of London. On it, they would reproduce a large body of text, quoting from Wesley's extensive entry in his journal for **Wednesday 24 May 1738**.

Wesley's journal was published in his lifetime but only three copies of the first edition are known to exist. Sadly, the original manuscript is lost, so this is the earliest known surviving record. The best preserved copy is held by the *Wesley Historical Society* whose library, in the 1980s, was housed at

Southlands College in Wimbledon.

Bethesda, Bethlehem, Ebenezer, Georgetown, St Aubin, St Helier Methodist Centre, St Martin, St Ouen

The committee decided that a précis of the text would be drawn from several pages of the original record, to be reconstructed to look like one page of 18th century printed type. Interestingly, the original book is extremely small, with a page size of about 10×15 cm.

At that time, I was working at the college and I had the privilege of undertaking the design of the text that was ultimately cast in bronze on the face of what has become known as the “*Aldersgate Flame*”. What might now be accomplished in a few hours using a computer, took me considerably longer using a film camera to make high resolution photographic images. I then processed these in a darkroom and achieved the desired layout by physically cutting and pasting the various sections before photographing the final design.



When I had completed the facimile, I made a photographic transparency that was used by the artists at the *Morris Singer Foundry* to project the image onto an enormous screen in the factory, in order that every detail could be traced and turned into an actual size model for casting.

The monument was installed near the entrance to the Museum of London on the high walkway above London Wall. It was lifted onto its plinth by a crane, early on a Sunday morning, two weeks before Aldersgate Sunday in May 1981. I was there to see it

put in position, and it was unveiled a fortnight later in front of a large crowd that filled the pedestrian concourse.

Because of its position, it has been necessary to temporarily remove the monument on a couple of occasions in the past forty-two years, and it has currently been moved into storage yet again because the museum is being relocated to the former Smithfield Market building. The original museum building will be demolished, after only 45 years. I hope that it won't be too long before the monument is replaced in its original location - although if you've never seen it, I'm afraid you may have to wait for a while!

Hugh Lincé, January 2024



Bethesda, Bethlehem, Ebenezer, Georgetown, St Aubin, St Helier Methodist Centre, St Martin, St Ouen

Calling all organists – St Aubin



St Aubin is quite often without an organist. If anyone around the Circuit would be available to play for them from time to time that would be much appreciated. If you play the organ or the piano and are able to help then please contact Helen Cooke by email at staubinmethodist@gmail.com

Ideally St Aubin would like to have a list of willing volunteers so that nobody is called upon too often, unless of course, it is something they feel called to do in support of Annette, their regular organist!

Jersey Fairtrade Island Group – Tony Allchurch

The Annual General Meeting was held on 21 November 2023 at Coopers Castle Quay. Special thanks to Pam and David Warr for providing a warm and cosy venue and the welcome refreshments. This was Tony's final meeting as Chairman so it was tinged with some sadness as he came to the end of a very long term of office but the journey has been rewarding as well as occasionally challenging and they have succeeded in maintaining their status as a Fairtrade Island since it was first awarded in February 2005.

Jersey has always enjoyed a special relationship with the leadership of The Fairtrade Foundation and the recent visit by Chief Executive Mike Gidney confirms that the committee of Jersey Fairtrade Island Group is held in high regard for its success in promoting Fairtrade in the island.

Tony's departure (he was awarded the British Empire Medal last month) leaves a gap that is yet to be filled. However, Jim Hopley has agreed to assume responsibility for the committee until a new chairperson has been installed, although he has many important commitments to other organisations so it is vital that the committee is restored to full strength as soon as possible. Tony hopes that change will prove to be opportunity and that Jersey Fairtrade Island Group can move forward with new leadership and purpose. If you are interested in learning more about the work of the committee or can recommend someone else who might be a candidate please contact any current members of the committee for more information.



Thank you for your support and friendship over many years and in future expect to receive messages from Jim Hopley. The Fairtrade Foundation has changed its plans for Fairtrade Fortnight to suit the requirements of the major retailers in the UK so please note in 2024 the dates are Monday 9 to Sunday 22 September.



Bethlehem
Methodist Church

Saturday 20 January

Supper & Cinema

Meal - 6.00pm

Film - 7.30pm

To **book your place** contact:

Dianne on 07797 747621 or
diannehuddlestone@gmail.com



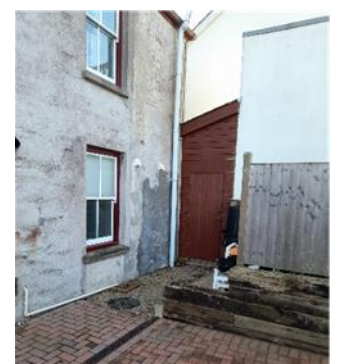
Ebenezer - 2 bed flat available



Ebenezer had a flat built in the top area of the cottage in 2009. The whole area was rebuilt and renewed with insulation throughout. Their existing tenants who have been with them for 11 years are moving out, only because a house has become available through a family member. The unfurnished flat will be available from end of February and is now in the hands of an estate agent who will also manage for the future on their behalf.



The outside photos show the flat runs the entire length of the first floor of the cottage. The main bedroom has 2 windows looking down towards the front. On the back starting from the chimney end is the back bedroom, the window on the staircase to the flat (own entrance door at ground floor underneath). Then the kitchen, bathroom and the lounge which also has a west facing window. It has 2 good sized bedrooms, a bathroom, kitchen/diner, bathroom and lounge.



There is also a garden area and an outside store which can take 2 bikes and plenty more. Dedicated parking for 2 cars, plus ample visitor parking. Bus stop by the church. Unfurnished. The rental price is still to be confirmed.

To register an interest, please contact Mike Picot by emailing michaelpicotjsy@gmail.com

Bethesda, Bethlehem, Ebenezer, Georgetown, St Aubin, St Helier Methodist Centre, St Martin, St Ouen



Kairos Arts are looking for a Treasurer to join their board

About Kairos Arts

Kairos Arts is a charity in Jersey rooted in and compelled by Christian principles. We are passionate about restoring hope, dignity and worth to individuals using the creative arts. We seek to empower, envision and equip. We provide group workshops and one-to-one sessions for children and adults. We also offer therapeutic arts training to upskill professionals and practitioners in how to use the therapeutic arts with their clients, pupils and patients.

We are looking for a new Treasurer to join our board. We have a paid Finance and Governance Manager who completes all the book-keeping using QuickBooks online and oversees all our financial processes. We pay an external accountant to prepare our annual accounts. Our accounts are not yet audited but we would be keen for them to be independently reviewed or audited in the coming years as the organisation grows.

Responsibilities:

- Provide financial oversight and guidance;
- Collectively ensure legal and constitutional compliance;
- Monitor and report on financial health;
- Collaborate with management and external accountant;
- Assist in establishing effective financial procedures;
- Contribute to the organisation's financial viability.

Requirements:

- Qualified accountant;
- Understanding of accepted accounting practices and relevant legislation;
- Commitment to attending quarterly evening board meetings.

How to Apply:

For more information, contact CEO Cathy Sara or Chairperson Dr. Kate Wilson.

Cathy@kairosarts.org 07829 710201 or Kate@kairosarts.org 07797898963

Generations



Generations held its first gathering of the year with young children and senior folk engaging over craft and board game activities, providing a really enjoyable time for all. The next session is on Friday 9 February.

Thank you

Although I am retiring as Circuit and CI District Administrator on 31 January, it is a quiet 'au revoir' not a dramatic 'adieu'. I will always be indebted to the trust of the Revd Graeme Halls, who I told at my interview that I couldn't fill a postage stamp with what I knew about the Methodists ("but was willing to learn")! Coming from a Church of Ireland tradition, it was initially a vertical learning curve but with endless kindness, patience, support and a passion for Methodism from too many members and staff to mention (and the opportunity to attend a course at Cliff College in Derbyshire) my work, faith and personal life have been endlessly enriched and blessed over the past 5¾ years. The role has changed substantially since I arrived: Covid, moving to work from home, becoming personal assistant to Rev Dawn, the newsletter and getting to know more and more members around the Circuit. I have been immensely privileged and it has enabled me to flourish and, for better or worse, to be the person I really am.



I will be continuing to do the administration for Georgetown Church but I send a heartfelt thanks for your friendship, example and showing me the Methodist Way.

Audrey xxx



One Sunday a minister told the congregation that the church needed some extra money and asked the people to prayerfully consider giving a little extra in the offering plate. He said that whoever gave the most would be able to pick out three hymns. After the offering plates were passed around the minister glanced down and noticed that someone had placed a £1,000 note in the offering. He was so excited that he immediately shared his joy with his congregation and said he would like to personally thank the person who placed the money in the plate. A very quiet, elderly and saintly lady all the way in the back shyly raised her hand. The minister asked her to come to the front. Slowly she made her way to the minister. He told her how wonderful it was that she gave so much and, in thanks, asked her to pick out three hymns. Her eyes brightened as she looked over the congregation, pointed to the three handsomest men in the church and said, "I'll take him and him and him!"

Bethesda, Bethlehem, Ebenezer, Georgetown, St Aubin, St Helier Methodist Centre, St Martin, St Ouen

Circuit Diary

Gentlemen's Lunch



The next Circuit Men's Lunch will be at the **Topsy Toad** in St Peter on **Wednesday 24 January, 12.30pm**. All the regulars from around the Circuit will be there and they would welcome some more new faces for fellowship. There is plenty of parking and a regular hourly bus from town (No 9). Why not give it a go?

Beetle Drive

A beetle drive will be held at the **St Helier Methodist Centre** on **Saturday 10 February, at 6.30pm for 7.00pm**. A terrific night out for all ages. Free entry with donations to Kairos Arts. Light refreshments will be served.



Regular dates

Weekly socials

- Mondays: 1.00 – 4.00pm – St Aubin (not bank holidays)
- Wednesdays: 10.30 – 11.45am – Samares
- Thursdays: 10.00am – 12.00pm – Georgetown
- Thursdays: 10.00am – 12.30pm – St Aubin (concluding with a short service at 12.00pm on the second Thursday of each month)

Special events

- Saturday 20 January, Bethlehem. A Man Called Otto (meal 6.00pm, film 7.30pm)
- Tuesday 23 January, 7.30pm, St Martin. Circuit meeting
- Wednesday 24 January, 12.30pm, Topsy Toad. Circuit Gentlemen's Lunch
- Wednesday 7 February, 7.30pm. District Policy Committee on Zoom.
- Friday 9 February, 2.45pm. Ebenezer, Generations
- Saturday 10 February, 6.30pm, SHMC. Beetle Drive

As the Circuit Office email account (circuit.office.jsy@gmail.com) will not be monitored every day from 1 February, replies from this email address may take a little longer than usual.

Bethesda, Bethlehem, Ebenezer, Georgetown, St Aubin, St Helier Methodist Centre, St Martin, St Ouen